



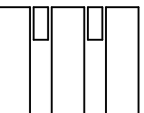
maten in het werk controleren en inmeten

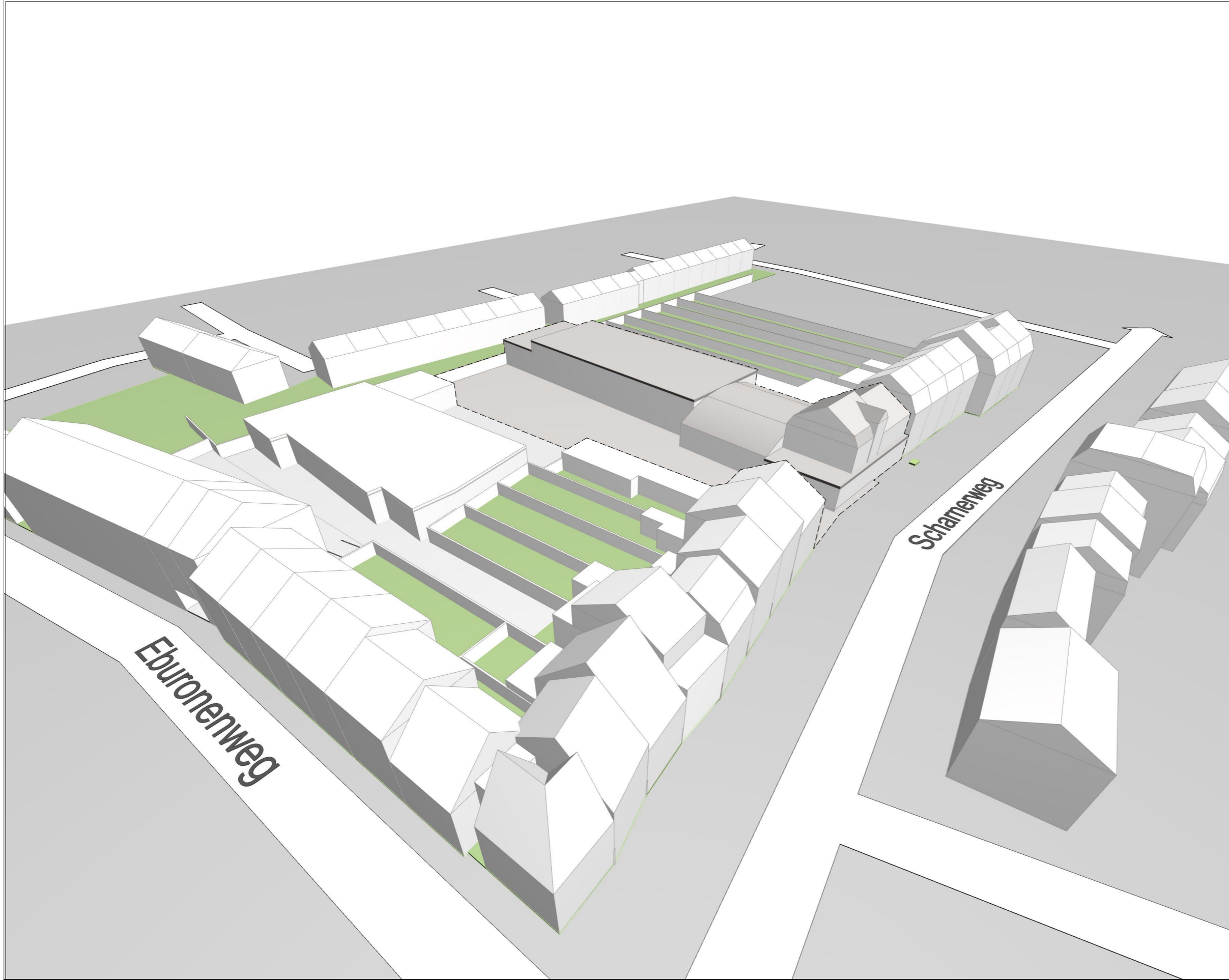


Woningen Scharnerweg 66/68-68C
BESTAAND: situatie

datum 01.04.2021
schaal 1:1000
blad 01

michel.j.h.m. rompelberg de valk 3 6301 hr valkenburg a.d. geul 043-6010090



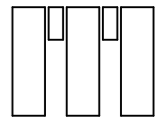


maten in het werk controleren en inmeten



Woningen Scharnerweg 66/68-68C
BESTAAND: 3D impressie
michel.j.h.m. rompelberg de valk 3 6301 hr valkenburg a.d. geul 043-6010090

datum 01.04.2021
schaal geen
blad 02





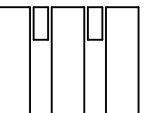
maten in het werk controleren en inmeten

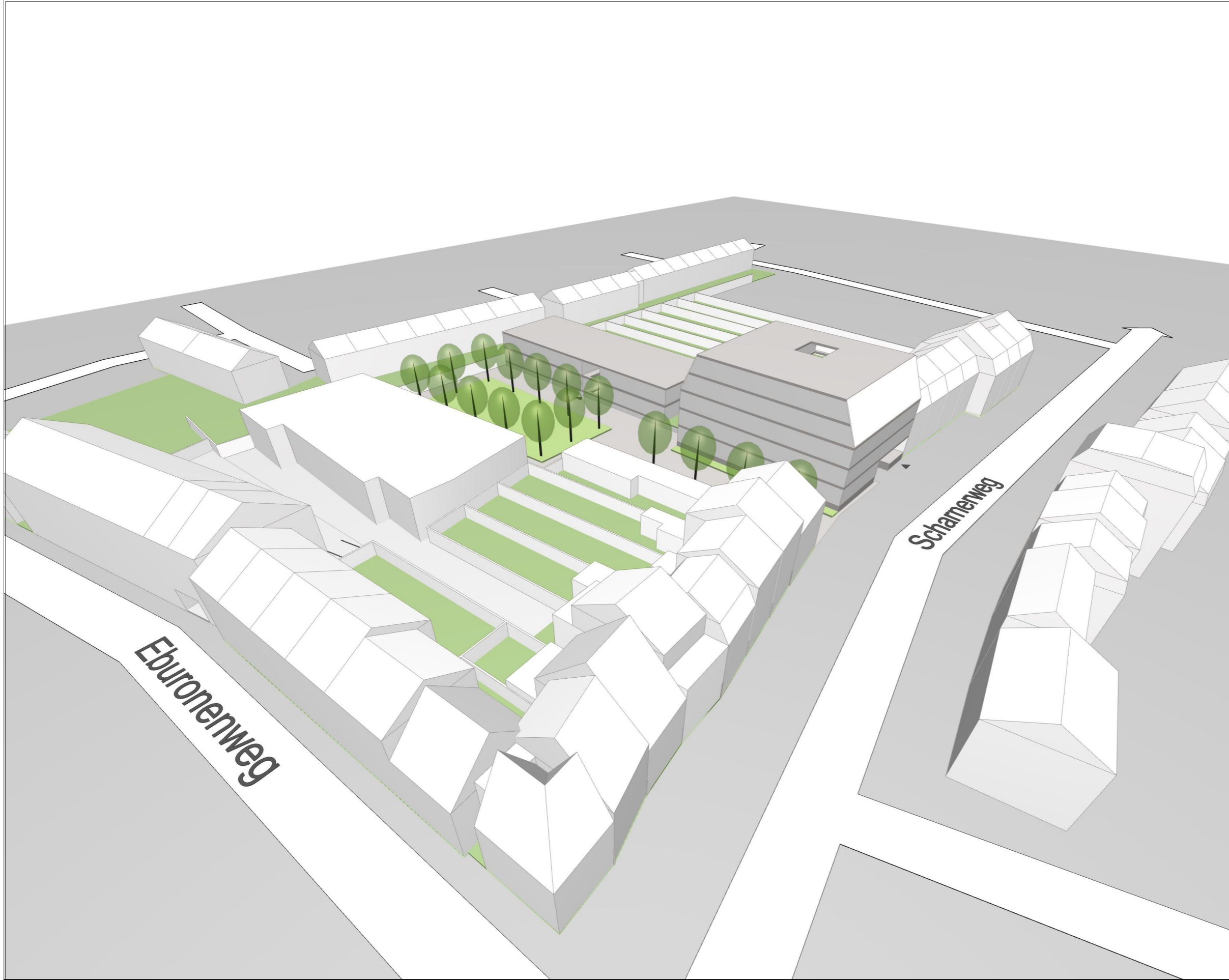


Woningen Scharnerweg 66/68-68C
NIEUW: situatie

datum 01.04.2021
schaal 1:1000
blad 03

michel.j.h.m. rompelberg de valk 3 6301 hr valkenburg a.d. geul 043-6010090





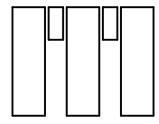
maten in het werk controleren en inmeten



Woningen Scharnerweg 66/68-68C
NIEUW: 3D impressie

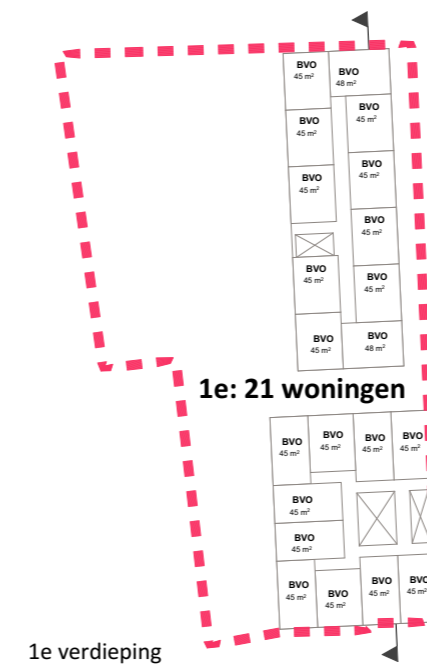
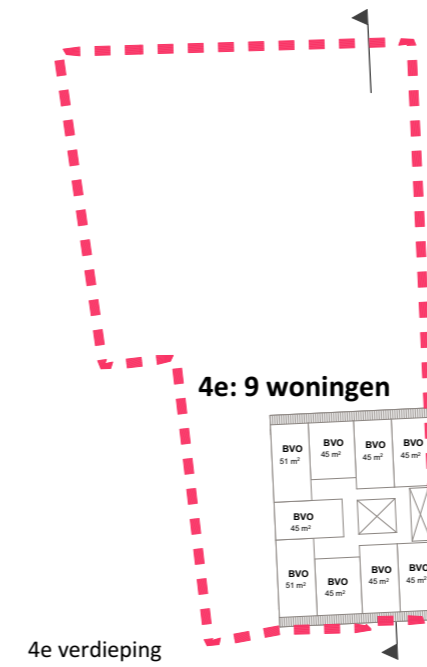
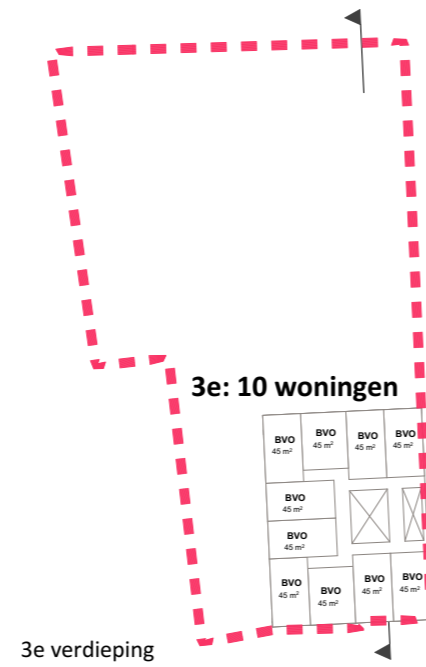
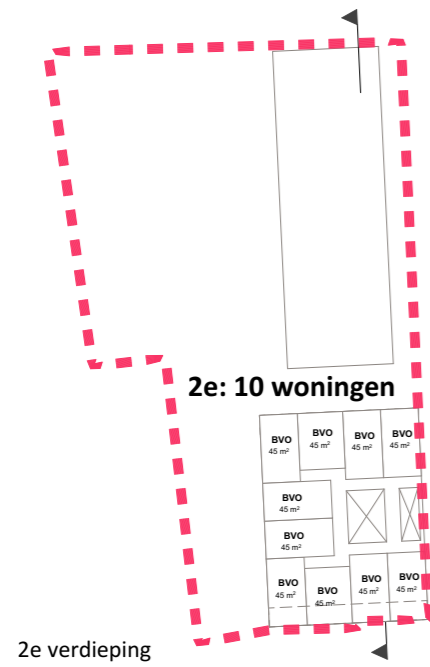
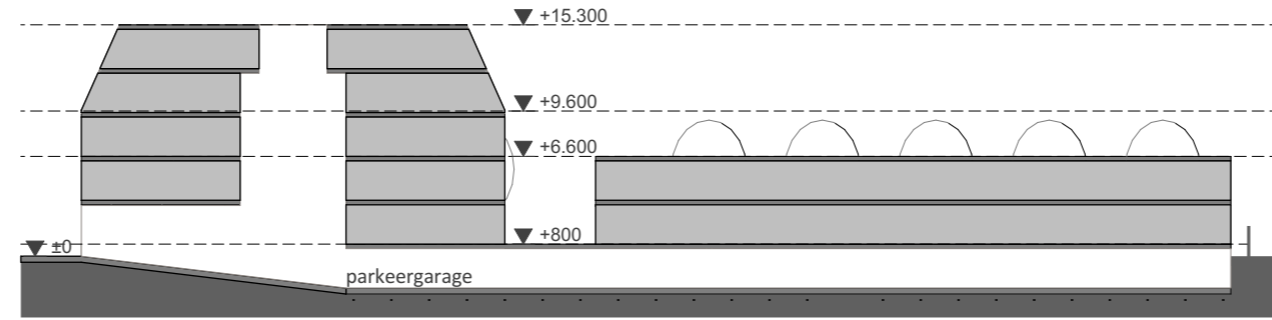
datum 01.04.2021
schaal geen
blad 04

michel.j.h.m. rompelberg de valk 3 6301 hr valkenburg a.d. geul 043-6010090



**totaal aantal woningen:
65 stuks**

**totaal aantal parkeerplaatsen:
44 stuks**



maten in het werk controleren en inmeten

